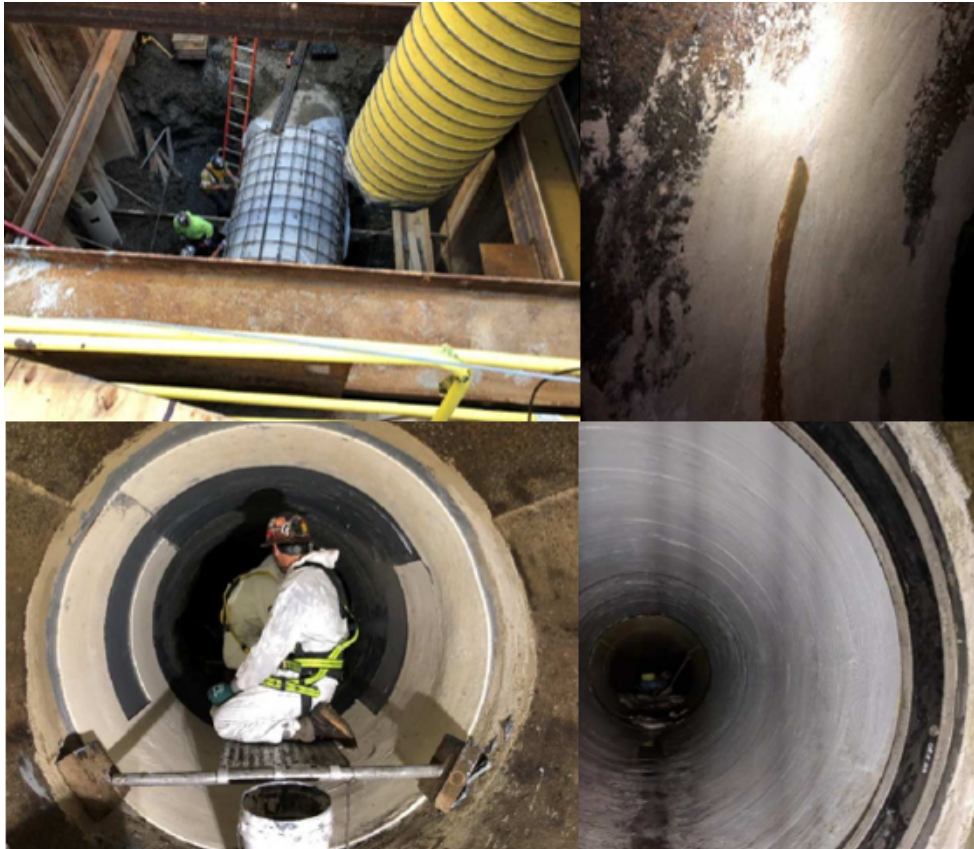


New Jersey 66" RCP Storm Drain Repair With StifPipe®



- StifPipe® was used to retrofit a 66" reinforced concrete pipe (RCP) installed internally with the wet-layup installation method in 4 days.
- The standalone design was for retrofitting a damaged section of the host RCP. The StifPipe® used for this project was comprised of 3 layers of FRP and 1 layer of 3D core fabric.
- StifPipe® was installed by Spiniello with supervision from QuakeWrap®. A dual glass fiber layer served as an impervious barrier to stop the leakage of the pipe.
- QuakeWrap® fiber reinforced polymer (FRP) systems are designed for a minimum of 50-year service life without any failure or compromise in the level of service of the system.