



**Infrastructure Innovators Since 1994**

**QuakeWrap, Inc.**

6840 S. Tucson Blvd., Tucson, AZ 85756

(520) 791-7000, FAX (520) 791-0600

Toll Free (866) QuakeWrap (782-5397)

[www.quakewrap.com](http://www.quakewrap.com)

## **PROJECT PROFILE**

### **New Jersey 66" RCP Storm Drain Repair with StifPipe®**

**Repair System:** StifPipe® FRP technology applied to rehab large underground storm drain system

**General Contractor:** Spiniello Companies, Inc.

**FRP Installer:** FRP Construction

**Pipe Repair Design:** QuakeWrap, Inc.

**Location:** Edison, NJ

#### **Project Synopsis:**

- StifPipe® was used to retrofit a 66" reinforced concrete pipe (RCP) installed internally with wet-layup installation method in 4 days.
- The standalone StifPipe® system was designed to retrofit a damaged section of the host RCP storm drain. The StifPipe® system used for this project was comprised of (3) layers of FRP and (1) layer 3D core fabric.
- StifPipe® system was installed by Spiniello with supervision from QuakeWrap®. A dual glass fiber layer was served as an impervious barrier to stop the leakage of the host pipe.
- QuakeWrap® fiber reinforce polymer (FRP) systems are designed for a minimum 50-year service life without any failure or compromise in the level of service of the system.

**Contact an engineer today at  
[info@quakewrap.com](mailto:info@quakewrap.com)**



**Infrastructure Innovators Since 1994**

**QuakeWrap, Inc.**

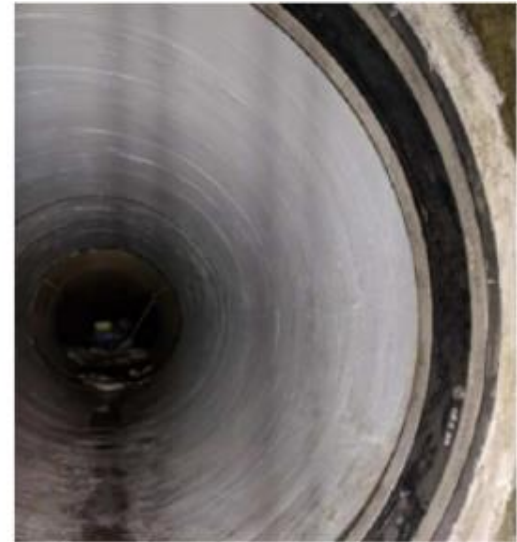
6840 S. Tucson Blvd., Tucson, AZ 85756

(520) 791-7000, FAX (520) 791-0600

Toll Free (866) QuakeWrap (782-5397)

[www.quakewrap.com](http://www.quakewrap.com)

**Project Photos:**



**Contact an engineer today at  
[info@quakewrap.com](mailto:info@quakewrap.com)**