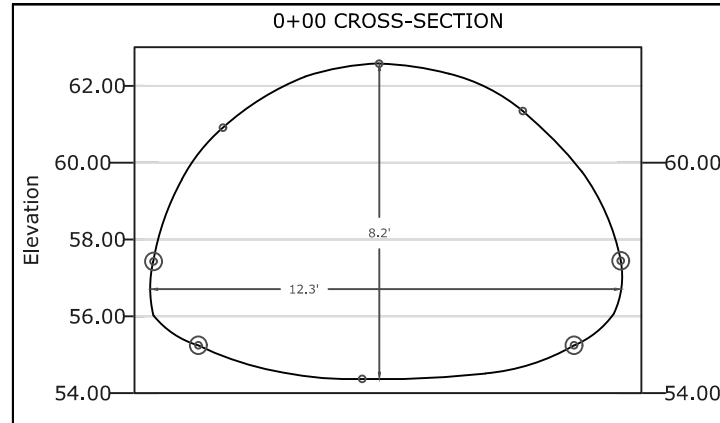
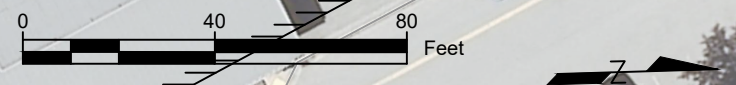
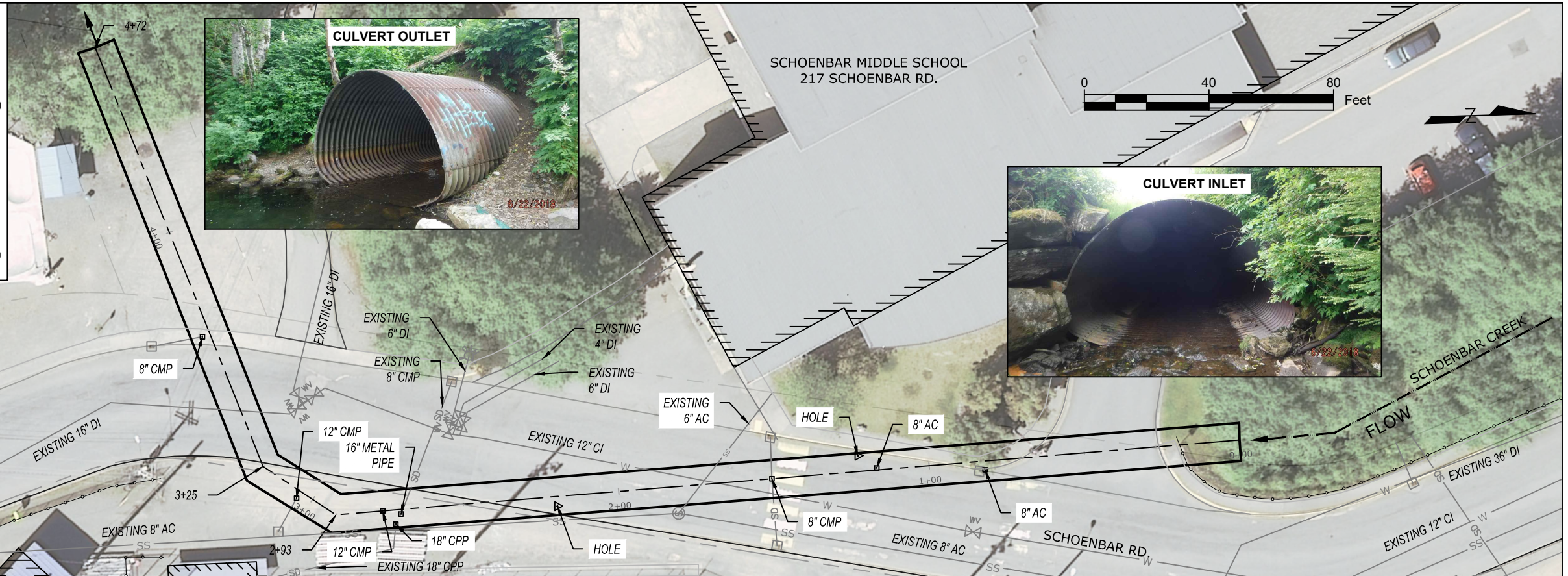


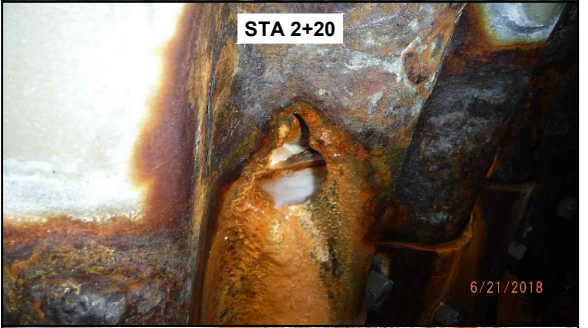
Z:\PUBLICWORKS\PROJECTS\2019 PROJ\19-15 SCHOENBAR CULVERT REHABILITATION\2.0 PLANSET\2.1 PLAN REVIEWS\19-15 SCHOENBAR CULVERT REHABILITATION



◎ JOINT: CONSISTENT THROUGHOUT
 ○ JOINT: STAGGERED THROUGHOUT
 • AVERAGE RISE: 8.2'
 • AVERAGE SPAN: 12.3'
 • CORRUGATIONS: 6" X 2"
 • STRUCTURAL PLATES: 8



CULVERT PENETRATIONS		
STATION	PIPE SIZE/TYPE	APPROXIMATE HOLE SIZE
0+82	8" AC	
1+17	8" AC	
1+23	-	18"X12"
1+50	8" CMP	
2+20	-	2"X2"
2+70	16" METAL	
2+72	18" CPP	
2+75	12" CMP	
3+05	12" CMP	
3+73	8" CMP	



No.	Date	By	Revision

Project:
 SCHOENBAR CULVERT
 REHABILITATION
 CONTRACT 19-15

PLANSET PREPARED BY
 CITY OF KETCHIKAN
 PUBLIC WORKS DEPARTMENT

Date:	APRIL 2019	Scale:	1"=40'
Drawn By:	KMILLER	Station:	
Sheet Title:	EXISTING CONDITIONS	Sheet No.:	2 OF 3

