



Infrastructure Innovators Since 1994

QuakeWrap, Inc.

6840 S. Tucson Blvd., Tucson, AZ 85756

(520) 791-7000, FAX (520) 791-0600

Toll Free (866) QuakeWrap (782-5397)

www.quakewrap.com

PROJECT PROFILE

New Jersey 66" RCP Storm Drain Repair with StifPipe®

Repair System: StifPipe® FRP technology applied to rehab large underground storm drain system

General Contractor: Spiniello Companies, Inc.

FRP Installer: FRP Construction

Pipe Repair Design: QuakeWrap, Inc.

Location: Edison, NJ

Project Synopsis:

- StifPipe® was used to retrofit a 66-inch diameter reinforced concrete pipe (RCP). The repairs were completed in 4 days using the wet-layup installation method.
- The 66-inch reinforced concrete pipe (RCP) storm drain was buried at 18-ft deep, resulting in an overburden pressure of 21 psi.
- The standalone StifPipe® system was designed to retrofit a damaged section of the host RCP storm drain. The StifPipe® system used for this project was comprised of (3) layers of FRP and (1) layer 3D core fabric.
- StifPipe® system was installed by Spiniello with supervision from QuakeWrap®. A dual glass fiber layer served as an impervious barrier to stop the leakage of the host pipe.
- QuakeWrap® fiber reinforce polymer (FRP) systems are designed for a minimum 50-year service life without any failure or compromise in the level of service of the system.

**Contact an engineer today at
info@quakewrap.com**



Infrastructure Innovators Since 1994

QuakeWrap, Inc.

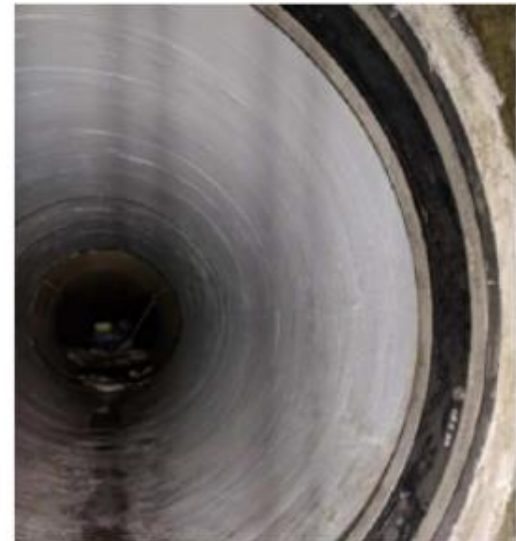
6840 S. Tucson Blvd., Tucson, AZ 85756

(520) 791-7000, FAX (520) 791-0600

Toll Free (866) QuakeWrap (782-5397)

www.quakewrap.com

Project Photos:



**Contact an engineer today at
info@quakewrap.com**